

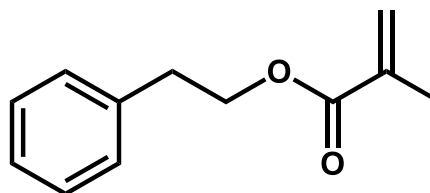
## BIMAX® PEMA

2-Phenylethyl methacrylate

CAS No. 3683-12-3

EINECS No. 222-969-0

*Experimental*



### Applications

This material is a high purity, high refractive index monomer for contact lens and intraocular lens applications.

#### Typical Properties

Active monomer, %	> 99.0
MEHQ, ppm	50-100
Color, APHA	< 50

#### Physical Properties

Appearance	liquid
Molecular weight	190.2 g/mol
Density	1.02 g/cm <sup>3</sup>
Boiling point	107°C
Refractive index, 25°C	1.505
Glass transition temp (T <sub>g</sub> )	26°C

### Packaging

1-liter poly bottle, containing 1kg each  
5-gallon poly pail, containing 18kg each

### Storage and Handling

Store at temperatures below 32°C and in a well-ventilated space. Wear goggles and gloves. Eye and skin contact, as well as inhalation, should be avoided. If contact occurs, wash affected area immediately with cold water. Consult the Safety Data Sheet.

This information is presented for your consideration in the belief that it is accurate and reliable; however, Gelest makes no guarantees or warranty, either expressed or implied, of the accuracy or the completeness of this information. The information in this data sheet is designed only as a guidance for safe handling, storage and use of the substance. It is not a specification, nor does it guarantee any specific properties. All chemicals should be handled only by competent personnel, within a controlled environment. Individuals receiving this information are expected to use their own judgment in determining the relevancy for a particular circumstance. Accordingly, Gelest will not be responsible for damages of any kind resulting from the use of, or reliance upon, such information.